



ROTATIONSDÜSEN

ROTATING NOZZLES

Die TAFUN-CLEAN Rotationsdüsen sind für den Einsatz in TAFUN-CLEAN Oberflächenreinigungsgeräten bestimmt. Sie erzeugen durch die Drehbewegung eine pulsierende, hochturbulente Luftströmung mit hohem Reinigungseffekt.

- Berührungslose Reinigung oder Trocknung über pulsierenden Luftwirbel aus Rotationsdüsen
- Stabile druckunabhängige Drehzahl durch integrierte Regelung (pat.)
- Hohe Reinigungstiefe durch spezielle Druckluftdüsen mit Strahlbündelung
- Optimal für strukturierte Bauteile durch gewinkelte Düsenstellung
- Einfache Montage über Gewinde M20
- Optimal zur Nachrüstung in bestehende Produktionsanlagen
- Option: Drehzahlüberwachung
- Sonderausführung möglich
- Weitere Ausführungen verfügbar: CR, EX

The rotating nozzles are designed for use in TAFUN-CLEAN surface cleaning systems. They produce through the rotational movement a vibrant, high turbulent air flow with a high cleaning effect.

- Non-contact cleaning or drying with pulsating vortex of rotating nozzles
- Pressure-independent speed through an integrated rotation control (patented)
- High cleaning depth with special air nozzles with jet bundling
- Ideal for cleaning of structured parts due to angled nozzle position
- Easy to mount by thread M20
- Ideal for integration into already existing production lines
- Option: rotation control
- Custom made solutions available
- Other versions available: CR, EX

Typ Model	Ø Rotationsdüse Ø Rotating nozzle	Arbeitsbreite Working width	Arbeitsabstand Working distance	Betriebsdruck Operating pressure	EX-Version EX-Version	Drehzahlregelung Rotation control	Material Material	Max. Einsatztemperatur Max. temperature	Gewicht Weight	Artikelnummer Item number
	mm	mm	mm	bar				°C	kg	
TCR-7A-030	31	50	20–50	1,5–3,5	nein no	ja yes	V2A/MS	50	0,18	101196
TCR-7A-070	68	100	20–50	1,0–5,0	nein no	ja yes	V2A/MS	50	0,2	100315
TCR-7A-070-VA	68	100	20–50	1,0–5,0	nein no	ja yes	V2A	50	0,2	101325
TCR-7A-070-EX	68	100	20–50	1,0–5,0	ja yes	ja yes	V2A/MS	50	0,2	100316
TCR-7A-090	95	120	20–70	1,0–5,0	nein no	ja yes	V2A/AL/MS	50	0,25	100317
TCR-7A-130	135	160	20–70	1,0–5,0	nein no	ja yes	V2A/AL/MS	50	0,25	100318
TCR-7A-130-EX	135	160	20–70	1,0–5,0	ja yes	ja yes	V2A/MS	50	0,25	100319
TCR-7A-190	195	240	20–70	1,0–5,0	nein no	ja yes	V2A/AL/MS	50	0,3	100320
TCR-7A-070-S01	68	60	20–50	1,0–5,0	nein no	ja yes	V2A/AL/MS	50	0,3	100988
TCR-7A-070-S02	68	30	20–50	1,0–5,0	nein no	ja yes	V2A/AL/MS	50	0,3	100989
TCR-7A-070-S05	68	100	20–50	1,0–5,0	nein no	ja yes	V2A/AL/MS	50	0,3	101035
TCR-7A-070-S06	68	100	20–50	1,0–5,0	nein no	ja yes	V2A/AL/MS	50	0,3	101220
TCR-7A-070-S07	68	100	20–50	1,0–5,0	nein no	ja yes	V2A/AL/MS	50	0,3	101541
TCR-7A-130-S05	135	160	20–70	1,0–5,0	nein no	ja yes	V2A/AL/MS	50	0,3	101829

Der empfohlene Betriebsdruck liegt bei 1,0 (bzw. 1,5) bis 3,5 bar. In diesem Druckbereich regeln die Düsen die Drehzahl im werkseitig eingestellten Drehzahlbereich.
The recommended operating pressure is between 1.0 (or 1.5) and 3.5 bar. Within this pressure range, the nozzles regulate the revs within the rev speed set by the factory.

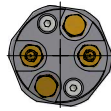
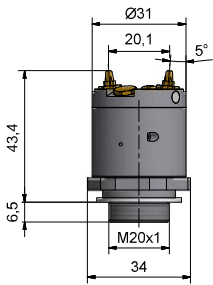


Druckluftverbrauch Air Consumption			
Typ Model	(NI/min)		
Betriebsdruck Air pressure	1 bar	2 bar	3,5 bar
TCR-7A-030	–	220	340
TCR-7A-070	140	220	340
TCR-7A-090/130/190	160	250	400
TCR-7A-070-S01	155	240	365
TCR-7A-070-S02	50	85	125
TCR-7A-070-S05	270	415	635
TCR-7A-070-S06	165	260	400
TCR-7A-070-S07	250	400	610
TCR-7A-130-S05	290	460	720

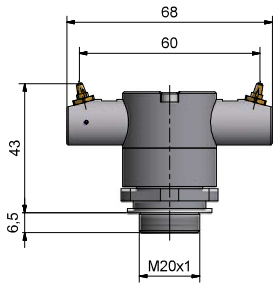
Montageschlüssel TCK7 für den Ein- und Ausbau von Rotationsdüsen
 Mounting tool TCK7 for assembly of rotating nozzles



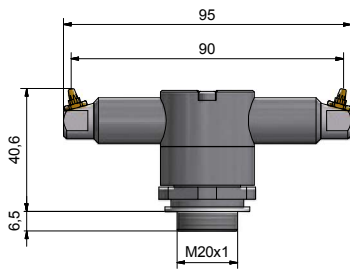
TCR-7A-030



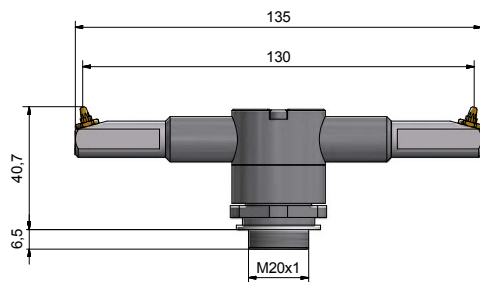
TCR-7A-070 / TCR-7A-070-VA / TCR-7A-070-EX



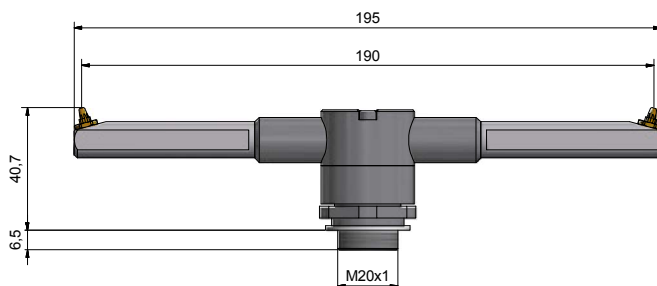
TCR-7A-090



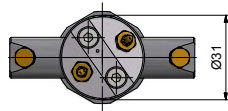
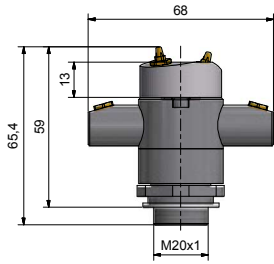
TCR-7A-130 / TCR-7A-130-EX



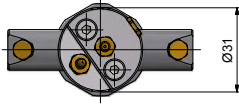
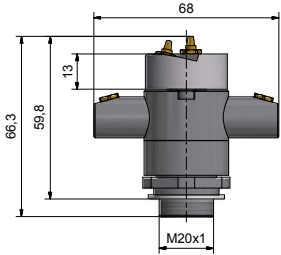
TCR-7A-190



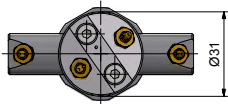
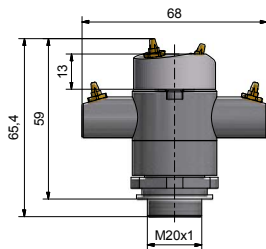
TCR-7A-070-S01



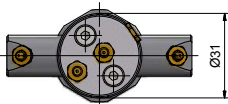
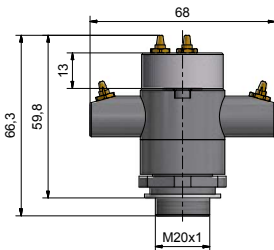
TCR-7A-070-S02



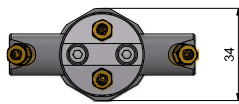
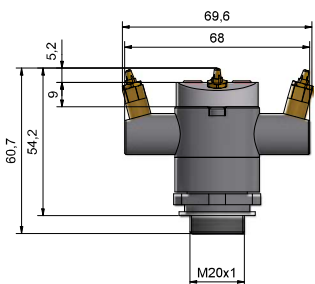
TCR-7A-070-S05



TCR-7A-070-S06



TCR-7A-070-S07



TCR-7A-130-S05

